

LYSIPRESSIN

Cas No: 50-57-7

Summenformel: C₄₆H₆₅N₁₃O₁₂S₂ (Amid)

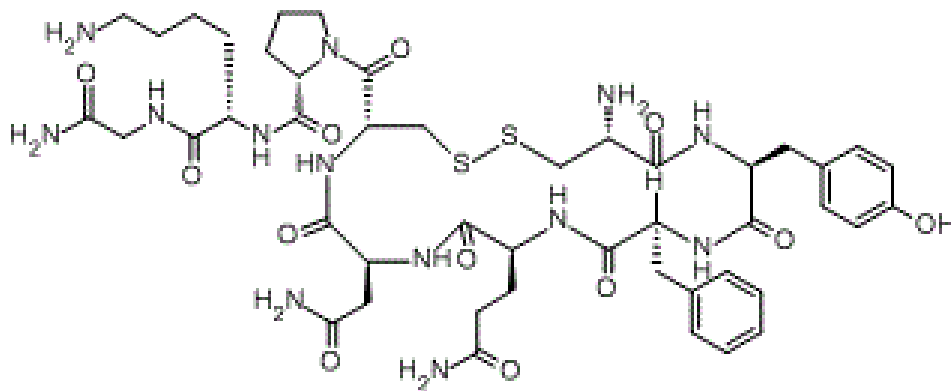
Molekulargewicht: 1056.22 g/mol

Source: Synthetic

Synonym: Lysine vasopressin; [Lys8]-Vasopressin, Lysine-ADH

Sequenz: H-Cys-Tyr-Phe-Gln-Asn-Cys-Pro-Lys-Gly-NH₂ (Disulfidbrücke zwischen Cys1 und Cys6). Modifikation : C-terminal Amid

Gegenion: Acetat



Strukturformel von Lysipressin
For research purposes only.

Lysipressin Acetate is an analog of Vasopressin, a powerful vasopressor used to modulate blood pressure. An endogenous antidiuretic hormone in most mammalian species. It is released into the blood from nerve terminals in the posterior pituitary and median eminence. It is a neurotransmitter in the central nervous system and also implicated in a variety of physiological processes such as regulating water balance by antidiuretic action. Lysipressin is an antidiuretic hormone that have been found in pigs and some marsupial families. Induces contraction of the rabbit urinary bladder smooth muscle, activates adenylate-cyclase.

References

Gorbulev V et al. Molecular cloning and functional characterization of V2 [8-lysine] vasopressin and oxytocin receptors from a pig kidney cell line. Eur J Biochem. 1993 Jul 1;215(1):1-7.

Rouille Y1, Chauvet MT, Chauvet J, Acher R, Hadley ME. The distribution of lysine vasopressin (lysipressin) in placental mammals: a reinvestigation of the Hippopotamidae (Hippopotamus amphibius) and Tayassuidae (Tayassu angulatus) families. Gen Comp Endocrinol. 1988 Sep;71(3):475-83.

Genosphere Biotechnologies

21 place de la République

F-75003 Paris

Internet:

www.biomodul.de/peptide.html

E-mail:

info@genosphere-biotech.de

